

1646 PORTOLA AVENUE

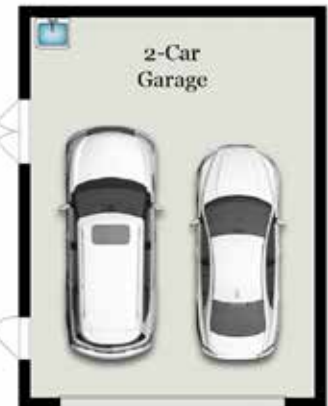
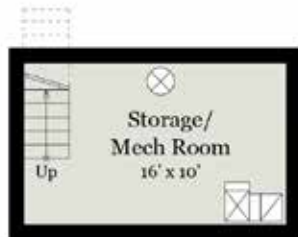
PALO ALTO, CA 94306



Estimated Total Finished Square Footage: 2,345 SQ FT

Above-Grade: 2,345 SQ FT Below-Grade: N/A
Plus 450 SQ FT Detached 2-Car Garage
Plus 210 SQ FT Basement
Plus 60 Attic Storage on Upper Level
Calculated per ANSI Standard Z765-2003.

* Estimated Total Finished & Unfinished Square Footage: 3,065 SQ FT



Nick Granoski
Real Estate Advisor

650-269-8556 | Nick@GranoskiWeil.com
www.GranoskiWeil.com | License: 00994196

Granoski | Weil
& ASSOCIATES