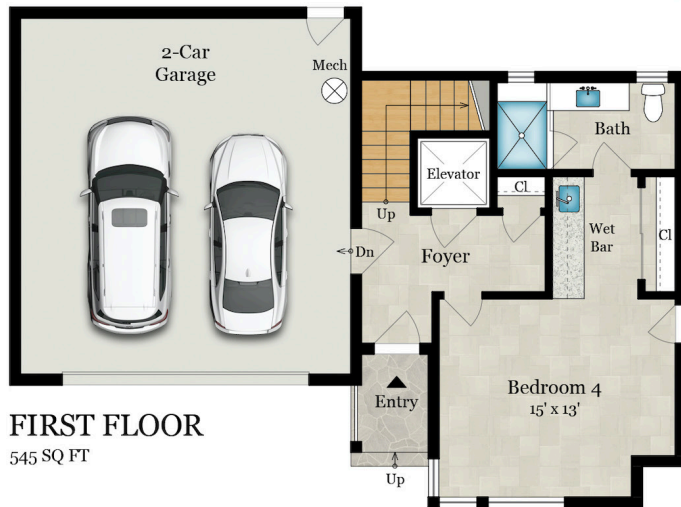


# 455 FOREST AVENUE | UNIT B

PALO ALTO, CA 94301



**Estimated Total Square Footage: 2,835 SQ FT**  
*Calculated from outside face of exterior walls and center line of demising walls.*

Plus 535 SQ FT 2-Car Garage (First Floor)



All measurements are approximate. While deemed reliable, no information on these floor plans should be relied upon without independent verification.